



# SEMI AUTOMATIC BOTTOM HOT MELT CASE SEALER

**K400HM**



Designed and engineered for Bottom sealing RSC cases. Case Sealer speeds up to 20 cases per minute



Legend Control Panel



Case Load Plate

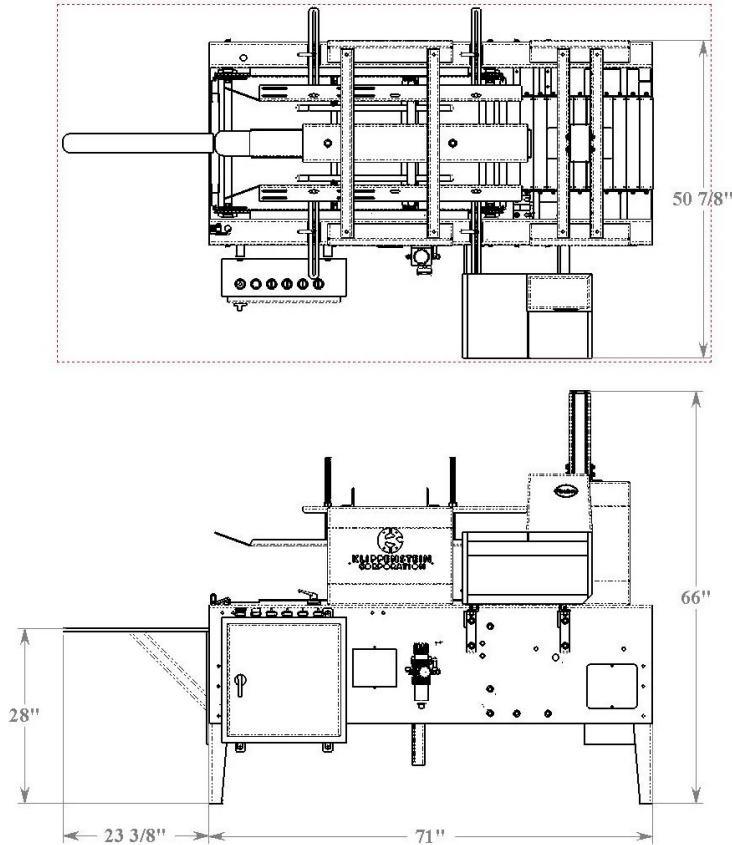


Compression Plate

**K400HM**

**Manufacturer of Packaging Machinery**

# SEMI AUTOMATIC BOTTOM HOT MELT CASE SEALER



STANDARD FEATURES		OPTIONAL
Machine Performance	Up to 20 CPM.	CPM outside of Standard Range
Machine Safety:	1/2" Lexan Shields & Fully Guarded Pinch Points	Stainless Steel Wire Mesh
Power req:	240VAC / 3 Phase / 60 Hz.	480VAC / 3 Phase/ 60Hz
Drive Shafts:	Stainless Steel, Precision Ground Shafts.	
Adjustability:	Crank screws adjust height and width.	
Case Advance:	Chain Driven Flight Bar	Powered Side Belts
Compression Type:	Pneumatic Compression Plate	
Corrosion Protection:	Powder coating and zinc plating on all surfaces.	Stainless Steel Construction
Standard Case Range	Min: 11"L x 7.5 "W x 10 "H Max: :26"L x 15.5 "W x 12"H	Case Sizes outside of Standard Range